

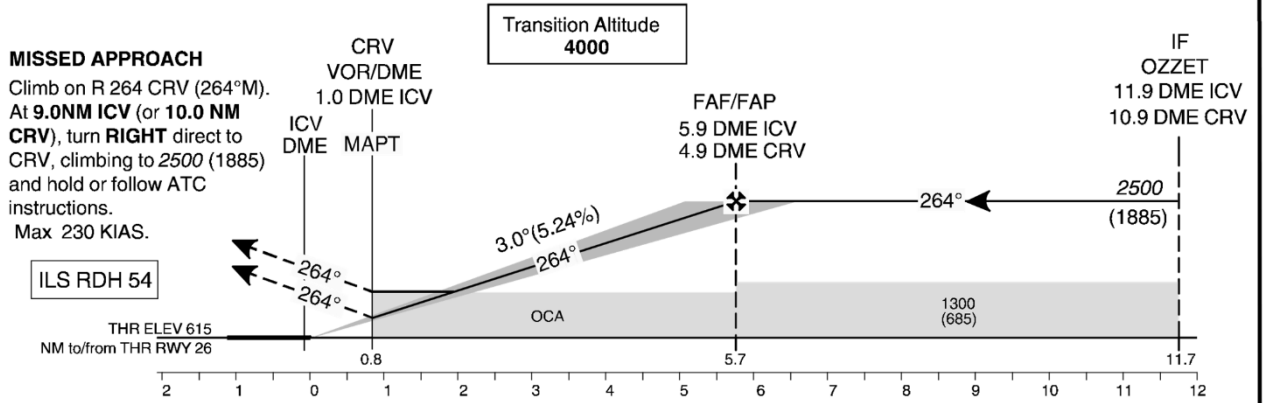
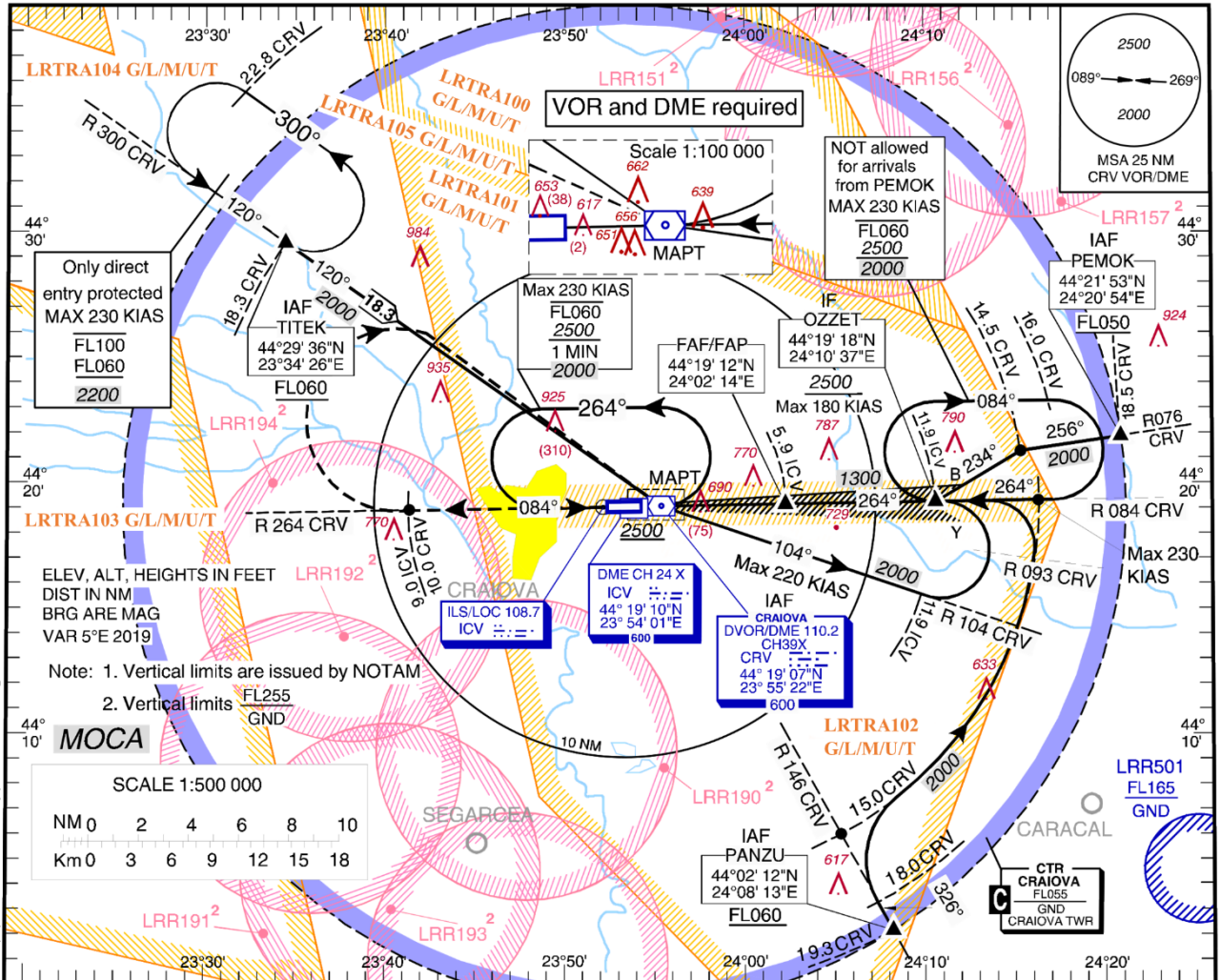
**LRCV/ CRA**  
**INSTRUMENT APPROACH CHART - ICAO**

**CRAIOVA, ROMANIA**  
**ILS RWY 26 CAT C,D**

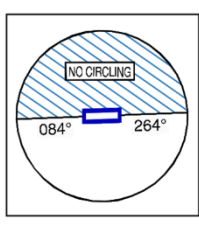
AERODROME ELEV. **628 ft**  
HEIGHTS RELATED TO THR RWY 26 - ELEV. 615 ft

LOC ICV **108.7**

GRANAT Tower **124.575**  
GRANAT Tower ALTN **122.100**



OCA (H)	C	D	DL
Straight-in Approach	CAT I	777 (162)	788 (173)
	CAT II	697 (82)	711 (96)
	GP INOP	940 (325)	-
Circling*	1320	-	-



GS	KT	70	90	100	120	140	160
FAF-MAPT 4.9 NM	MIN:SEC	4:12	3:16	2:58	2:27	2:06	1:50
Rate of descent (5.24%)	FT/MIN	371	478	531	637	743	849

Timing not authorized for defining the MAPT.

Dist to ICV DME	NM	2	3	4	5
Altitudes (Height)	FT	1250 (635)	1570 (955)	1890 (1275)	2210 (1595)

LRCV/ CRA

CRAIOVA, ROMANIA  
ILS RWY 26 CAT C,D

## AERONAUTICAL DATA TABULATION

ILS Approach to RWY 26 from TITEK, PEMOK, PANZU, CRV.	
Fix/Point	Coordinates
<b>TITEK (IAF)</b> – BRG 300.05° / 18.30NM CRV	44°29'35.8"N 023°34'25.9"E
<b>PEMOK (IAF)</b> – BRG 076.27° / 18.54NM CRV	44°21'52.9"N 024°20'54.5"E
<b>PANZU (IAF)</b> – BRG 146.26° / 19.28NM CRV	44°02'12.0"N 024°08'13.0"E
<b>CRV DVOR/DME (IAF)</b>	44°19'07.0"N 023°55'21.9"E
BRG 146.00° / 15.00NM CRV	44°05'57.4"N 024°05'22.5"E
BRG 084.00° / 15.00NM CRV	44°19'29.8"N 024°16'15.4"E
BRG 264.00° / 9.00NM ICV	44°18'55.7"N 023°41'29.4"E
BRG 075.98° / 14.50NM CRV	44°21'17.2"N 024°15'20.4"E
<b>OZZET (IF)</b> – BRG 083.95° / 11.91NM ICV	44°19'17.8"N 024°10'36.9"E
<b>FAF (GP INOP)</b> – BRG 083.95° / 5.90NM ICV	44°19'11.9"N 024°02'14.4"E
<b>MAPT (GP INOP)</b> – BRG 083.95° / 1.00NM ICV	44°19'06.9"N 023°55'24.8"E
<b>ICV LOC</b>	44°19'04.4"N 023°52'07.9"E
GP 26	44°19'09.8"N 023°54'01.4"E
<b>ICV DME</b>	44°19'09.9"N 023°54'01.3"E
<b>THR 26</b>	44°19'06.08"N 023°54'15.11"E
Final approach descent angle: 3.00°	
<b>RADIO COMMUNICATION FAILURE</b>	
<p>a) If ILS instrument flight procedure was assigned or received by ATC, set transponder 7600, proceed according assigned or designated ILS instrument flight procedure. Descending shall be executed in accordance with vertical restrictions specified on chart.</p> <p>b) If ILS instrument flight procedure was not assigned or received by ATC, set transponder 7600, proceed according to FPL to OZZET and hold 4 minutes, then continue the ILS approach. Descending shall be executed in accordance with vertical restrictions specified on chart.</p>	